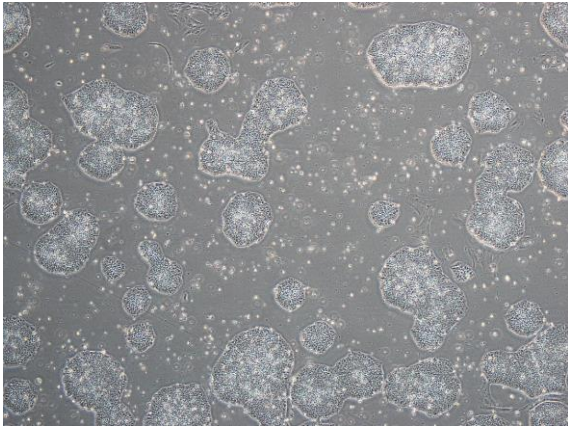
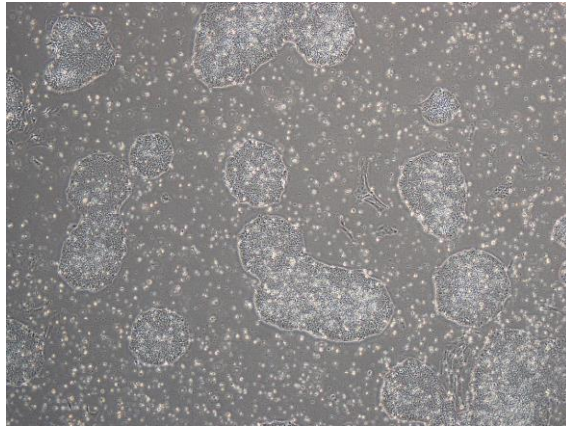


【 CiRA-j-1002 】 Morphology of iPSC colonies

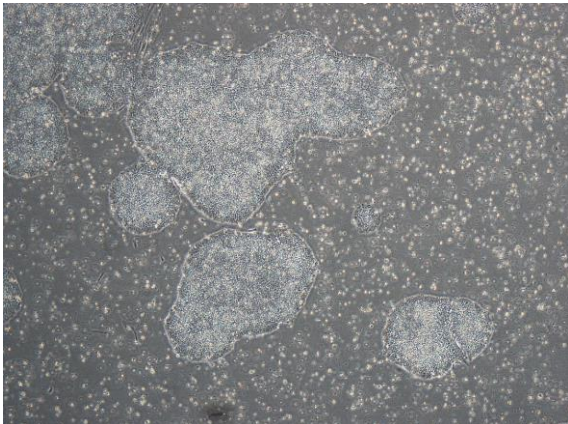
CiRA-j-1002-A: passage-2



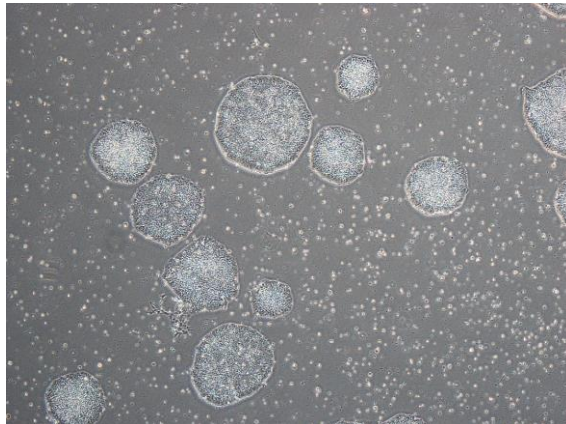
CiRA-j-1002-B: passage-2



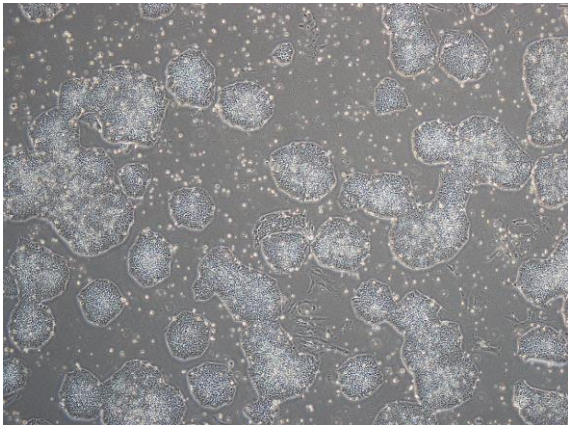
CiRA-j-1002-C: passage-2



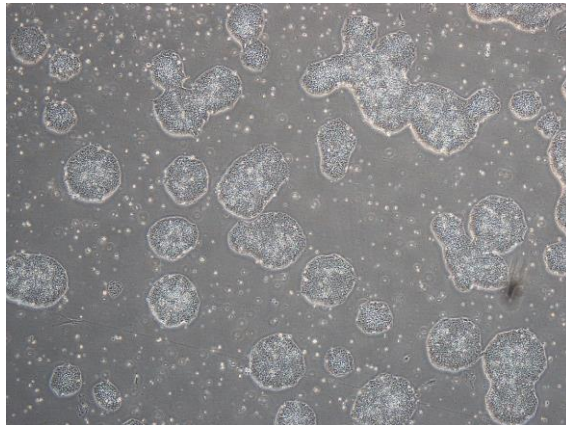
CiRA-j-1002-D: passage-2



CiRA-j-1002-E: passage-2



CiRA-j-1002-F: passage-2



(All images were captured at 4x magnification)